

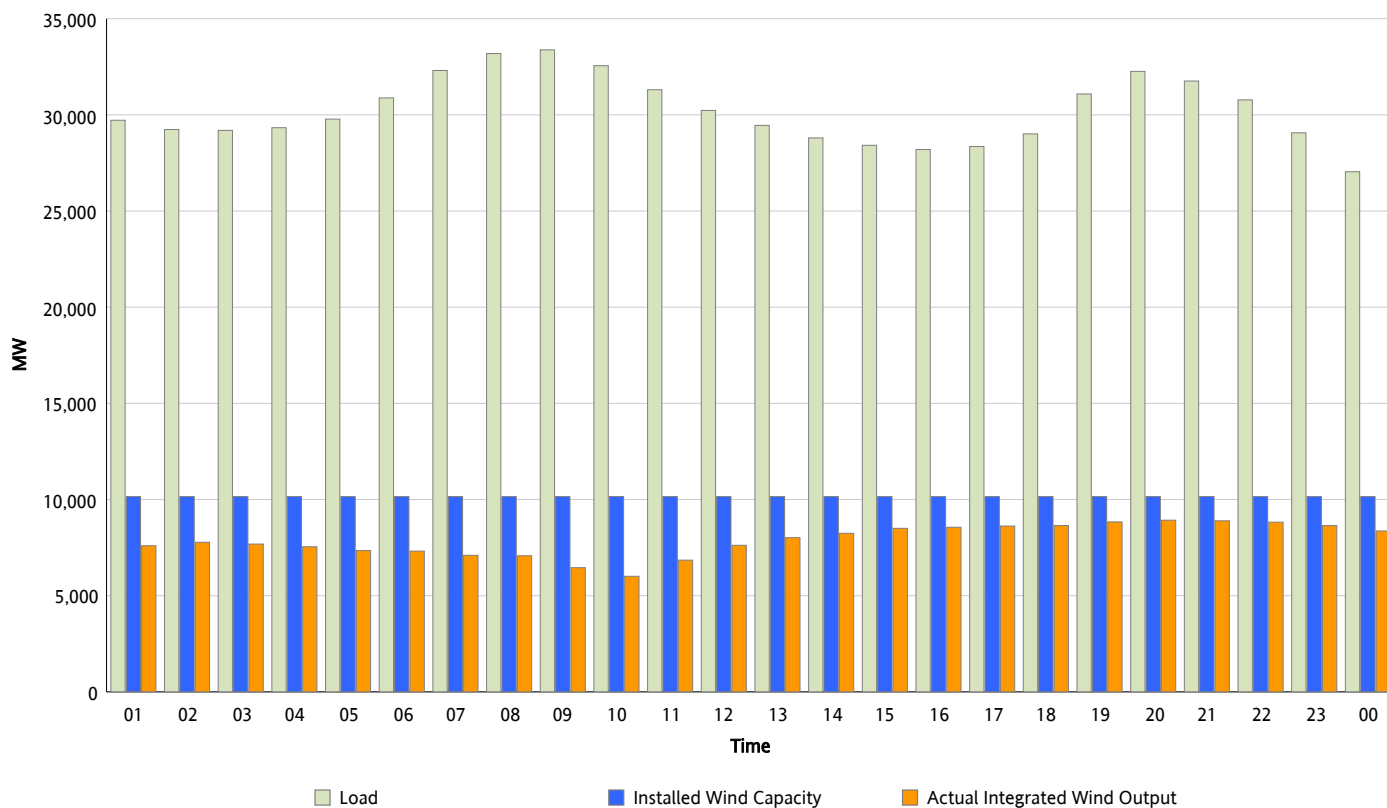


ERCOT Grid Operations

Wind Integration Report : 02/17/2013

| | |
|----------------------|-----------|
| Peak Load | 33,381 MW |
| Load Peak Hour (HE) | 09 |
| Wind Over Peak | 6,456 MW |
| Wind Record 02/09/13 | 9,481 MW |
| Max Wind Value* | 9,048 MW |
| Wind Peak Time | 19:05 |
| Wind Integration % | 28 % |

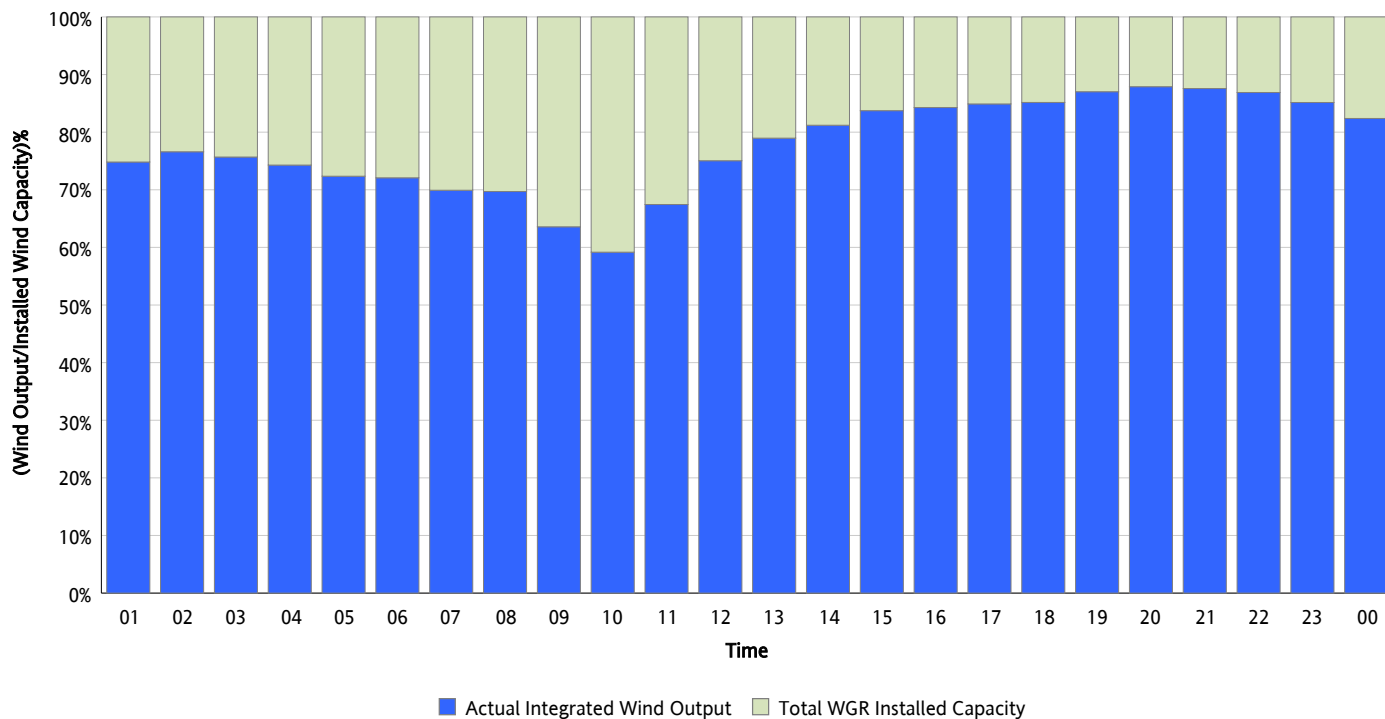
Hourly Average Actual Load vs. Actual Wind Output
02/17/2013



** Wind Record and Wind Max represent instantaneous values and the rest of the values are integrated over the hour*

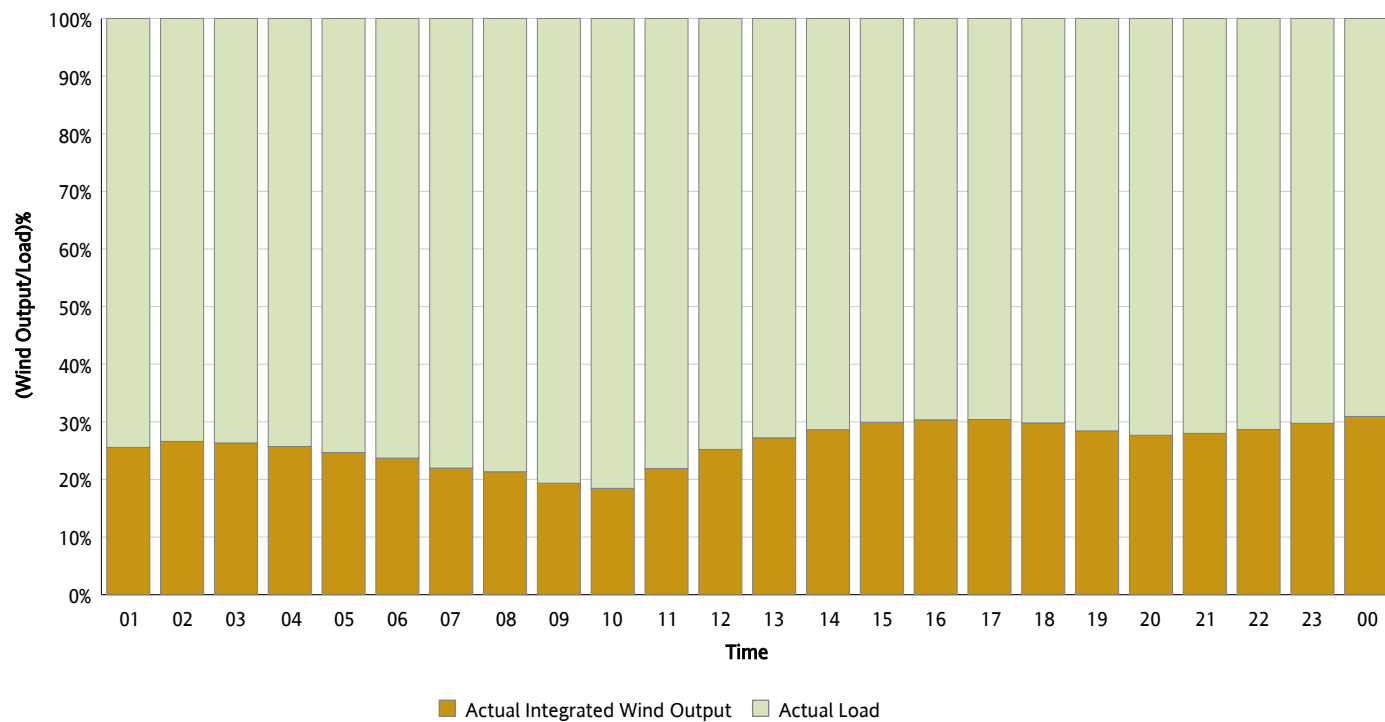
Actual Wind Output as a Percentage of the Total Installed Wind Capacity

02/17/2013



Actual Wind Output as a Percentage of the ERCOT Load

02/17/2013



ERCOT Load vs. Actual Wind Output

02/10/2013 - 02/17/2013

